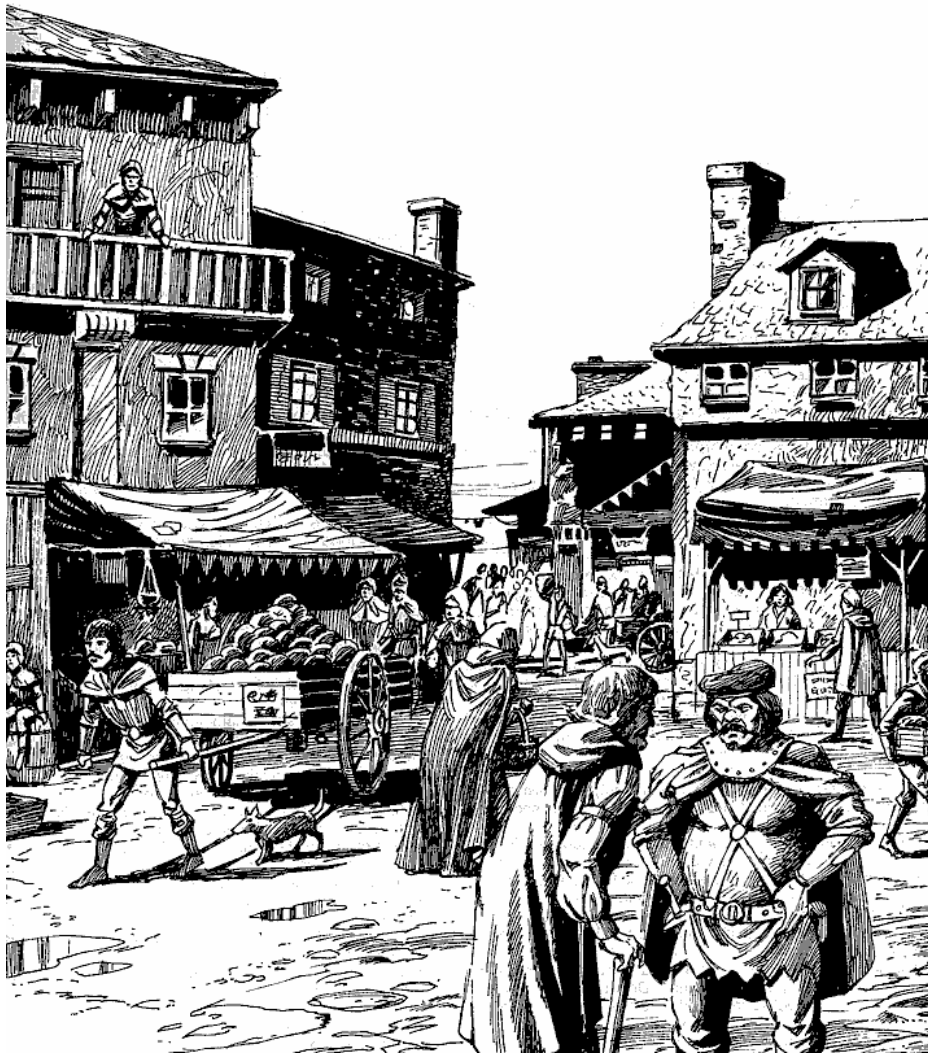


# HârnMaster PriceList

ᚱᚿᚢᚲᚰᚩ ᚱᚿ ᚢᚰᚰ ᚱᚿᚢᚲ ᚿᚢᚩ ᚱᚿᚰᚲᚰᚰᚰᚰᚰᚰᚰᚰ ᚱᚿ ᚱᚿᚰᚩ ᚩᚿᚰᚰ



Version 7.32i - August 2008  
by Fenhorn

ANIMAL TRAINER.....	3
APOTHECARY .....	3
ARMOURER.....	4
CHANDLER.....	5
CHARCOALER.....	5
CLOTHIER .....	5
COURTESAN/PROSTITUTE.....	6
EMBALMER.....	6
FISHERMAN .....	6
FLETCHER.....	7
GLASSWORKER.....	7
HARPER.....	7
HERALD.....	7
HIDEWORKER.....	7
INNKEEPER .....	8
JEWELER .....	9
LEXIGRAPHER.....	9
LITIGANT.....	9
LOCKSMITH.....	9
MANOR/MARKET .....	9
MASON.....	10
METALSMITH.....	10
MILLER.....	11
MINER.....	11
OSTLER.....	12
PERFUMER.....	12
POTTER .....	12
SALTER.....	13
SCRIBE.....	13
SHIPWRIGHT .....	13
SLAVER .....	13
TENTMAKER.....	13
THATCHER.....	14
THESPIAN .....	14
TIMBERWRIGHT .....	14
WEAPONCRAFTER .....	14
WHALER.....	15
WOODCRAFTER .....	15
INDEX.....	17

## ANIMAL TRAINER

300d +	BEAR/Trained
30d	DOG/Sled
24d	DOG/Trained
100d +	FALCON/Trained

## APOTHECARY

3d	HERB/Danistor Fungus [per pound]	
2d	HERB/Hreyochor Leaves [per ounce]	
9d	HERB/Kithyl Root [per eight ounce]	
100d +	OPIATES [per ounce]	
	<i>Additive painkiller that causes euphoria and pleasure when ingested. Appears as a chestnut-colored globular mass, sticky and soft at first but hardening with age. It is derived from the poppy plant. Imported.</i>	
2d	PIPEWEED [per ounce]	
3d	POTION/Baby-Can-Wait [per dose]	4 oz.
	<i>Common. A dark tea that acts as a contraceptive.</i>	
16d	POTION/Berilik Balm [per dose]	0,5 oz.
	<i>Common. This oily red paste are known to be both disinfectant and a good painkiller. Called Ichor of Agrik in Agrikan lands.</i>	
1f	POTION/Corruption Jelly [per dose]	1 oz.
	<i>Uncommon. A Khuzan condiment that overtime will increase the user's will and stamina. It is rare outside Azadmere (perhaps found in Gardiren and Tashal). Cost is 3-6 times higher outside Azadmere.</i>	
2d	POTION/Daddy-Can't-Wait [per dose]	1 oz.
	<i>Common. A white yellowish sap that is used as an emetic/laxative.</i>	
360d	POTION/Elmithra [per dose]	0,5 oz.
	<i>Rare. A cloudy colored medicine. The medicine greatly increases the resistance to diseases. Normally sold to physician so they can cure diseased patients (or to rich nobles).</i>	
3d	POTION/Eye-Of-Dwarf [per dose]	—
	<i>Common. A pale gold ointment that acts as an eye stimulant, although it has permanent side-effects that can be stopped by Tharin's Rock Salt. Uncommon in Gardiren and Tashal, unknown elsewhere.</i>	
24d	POTION/Eye-Of-Elf [per dose]	1 oz.
	<i>Rare. A blue-green liquid that is used to cure eye damages from diseases, cataracts, and minor injury.</i>	
2d	POTION/Fletharasha [per dose]	—
	<i>Common. A recreational drug. The leaves are usually burned (so the smoke can be inhaled) in a small flask made of apple wood is not included, but costs 4d and weighs 0,5 lb.</i>	
15d	POTION/Goodheart [per dose]	—
	<i>Rare. A sour red liquid that can is used as a heart stimulant (for heart seizures, etc.).</i>	
120d	POTION/Green Demon [per dose]	1 oz.
	<i>Rare. A green oil that is a powerful brain stimulant. Little made or used outside the Anoth Delta.</i>	
480d	POTION/Heal-All [per dose]	1 oz.
	<i>Rare. A pale green antidote sold as crystals that are mixed with water or drink.</i>	
24d	POTION/Heavy Curtain [per dose]	1 oz.
	<i>Uncommon. A yellowish liquid that is a powerful soporific.</i>	
36d	POTION/Halea's Tresses [per dose]	1 oz.
	<i>Rare. A green chewable narcotic that gives pleasant visions and euphoria. It is proscribed in Kaldor, Chybisa, and Kandy. It is available in Tharda, Rethem and Melderyn but is considered a sure sign of depravity.</i>	
36d	POTION/Heir-In-A-Bottle [per dose]	1 oz.
	<i>Rare. A golden fluid that increases the fertility for women.</i>	
24d	POTION/Hru's Might [per dose]	8 oz.
	<i>Common. A dusky strength liquid common throughout the Thard Valley, but rare elsewhere. Proscribed in Kaldor, Chybisa, and Melderyn.</i>	
16d	POTION/Ichor of Agrik [per dose]	0,5 oz.
	<i>Common. This oily red paste are known to be both disinfectant and a good painkiller. Sold in a waxed leather tube. Called Berilik Balm in Kandy and elsewhere.</i>	
72d	POTION/Khalmet's Theriac [per dose]	4 oz.
	<i>Rare. A antivenin. This antivenin are made both as a general antivenin and as a antivenin for a specific snakebite (usually a local variety).</i>	
24d	POTION/Maermal's Blessing [per dose]	2 oz.
	<i>Uncommon. A lavender strength liquid that smells slightly sweet. Not commonly found outside Kandy. Traded to Rethem (where it is called Ox-Blood) and the Thardic Republic.</i>	
36d	POTION/Nectar of Wisdom [per dose]	1 oz.
	<i>Uncommon. A potent euphoric hallucinogenic drug sold as soluble crystals. Proscribed in Melderyn and Chybisa.</i>	
2d	POTION/Tharin's Rock Salt [per dose]	—
	<i>Common. White and green crystals. Gives a taste of home for Khuzdul expatriates. Sold in a copper casket (engraved with the arms of Clan Tharin. Prices outside Azadmere will be at least double.</i>	
18d	POTION/Tirralla's Pillow [per dose]	1 oz.
	<i>Uncommon. A brown healing paste.</i>	

54d	POTION/Two-More-Legs [per dose] <i>Rare. A dun-colored dried mixture that acts as a horse stimulant.</i>	1 lb.
18d	POTION/Uhla Oil [per dose] <i>Common. A dark oil that acts as a brain stimulant. Proscribed in Melderyn.</i>	1 oz.
16d	SPICE/Alum [per ounce] <i>White salt-like crystals found in rock. It has a very sour taste. Alum is used as a preservative due to its astringent quality. Imported</i>	
50d	SPICE/Camphor [per ounce] <i>Aromatic white crystals of the camphor qualities but is poisonous in large doses. Imported.</i>	
40d	SPICE/Cinnamon [per ounce] <i>Yellowish or reddish-brown powdered dry inner bark of the cinnamon tree, used as a flavoring ingredient in foods, soaps and medicines. Cinnamon oil is used in perfumes. Imported.</i>	
30d	SPICE/Ginger [per ounce] <i>Pungent root, light brown in color and having a sharp, strong flavor. Imported.</i>	
170d	SPICE/Ginseng [per ounce] <i>Aphrodisiac and aromatic root powder. Imported.</i>	
180d	SPICE/Lashu Powder [per ounce] <i>Powdered leafstalks of a certain herb that grows only in Diramo. The powder is quite sour and is excellent for making preserves. It is believed to be a medicinal cure-all by western Lythians. Imported.</i>	
50d	SPICE/Nutmeg [per ounce] <i>Powdered aromatic seeds of the nutmeg tree. Imported.</i>	
36d	SPICE/Pepper [per ounce] <i>Dried berries (peppercorns) of the pepper plant. Hot to the taste and causes sneezing if inhaled. Imported.</i>	
45d	SPONGES [each] <i>Aquatic animal with a porous structure, occurring in large plant-like colonies. Imported.</i>	0,1 lb.
60d	SUGAR [per pound] <i>Maple sap or imported sugar extracted from sugar canes.</i>	
35d	TEA [per ounce]	

### ARMOURER

35d	3/4 HELM/Kurbul [Sk Fa]	1,8 lb.
175d	3/4 HELM/Plate [Sk Fa]	5,6 lb.
20d	AILETTES/Kurbul [Sh]	1 lb.
100d	AILETTES/Plate [Sh]	3,2 lb.
60d	BACKPLATE/Kurbul [Bk]	3 lb.
300d	BACKPLATE/Plate [Bk]	9,6 lb.
60d	BREASTPLATE/Kurbul [Ch]	3 lb.
300d	BREASTPLATE/Plate [Ch]	9,6 lb.
660d	BYRNIE/Mail [Ua Sh Tx Ab Hp Gr]	22 lb.
308d	BYRNIE/Ring [Ua Sh Tx Ab Hp Gr]	17,6 lb.
440d	BYRNIE/Scale [Ua Sh Tx Ab Hp Gr]	30,8 lb.
112d	CALFBOOTS/Ring [Cf Ft]	6,4 lb.
443d	COAT OF PLATES/Ring [Sh Tx Ab Hp Gr Th] <i>Scale on Thorax and Abdomen.</i>	28,4 lb.
28d	COLLAR/Ring [Nk]	1,6 lb.
10d	COUDES/Kurbul [El]	0,5 lb.
50d	COUDES/Plate [El]	1,6 lb.
95d	COWL/Mail [Sk Nk]	4 lb.
166d	COWL WITH VENTAIL/Mail [Sk Fa Nk]	5,5 lb.
28d	GAUNTLETS/Ring [Ha]	1,6 lb.
20d	GORGET/Kurbul [Nk]	1 lb.
100d	GORGET/Plate [Nk]	3,2 lb.
275d	GREAT HELMET/Plate [Sk Fa Nk]	8,8 lb.
50d	GREAVES/Kurbul [Cf]	2,5 lb.
250d	GREAVES/Plate [Cf]	8 lb.
20d	HALFHELM/Kurbul [Sk]	1 lb.
100d	HALFHELM/Plate [Sk]	3,2 lb.
28d	HALFHELM/Ring [Sk]	1,6 lb.
975d	HAUBERK/Mail [Fo El Ua Sh Tx Ab Hp Gr Th]	32,5 lb.
455d	HAUBERK/Ring [Fo El Ua Sh Tx Ab Hp Gr Th]	26 lb.
650d	HAUBERK/Scale [Fo El Ua Sh Tx Ab Hp Gr Th]	45,5 lb.
15d	KNEECOPS/Kurbul [Kn]	0,8 lb.
75d	KNEECOPS/Plate [Kn]	2,4 lb.
660d	LEGGINGS/Mail [Hp Gr Th Kn Cf Ft]	22 lb.

308d	LEGGINGS/Ring [Hp Gr Th Kn Cf Ft]	17,6 lb.
60d	MITTENS/Mail [Ha]	2 lb.
15d	REREBRACES/Kurbul [Ua]	1,5 lb.
150d	REREBRACES/Plate [Ua]	4,8 lb.
25d	VAMBRACES/Kurbul [Fo]	1,3 lb.
125d	VAMBRACES/Plate [Fo]	4 lb.
196d	VEST/Ring [Sh Tx Ab]	11,2 lb.
280d	VEST/Scale [Sh Tx Ab]	19,6 lb.

### CHANDLER

3d	BRUSH	0,5 lb.
24d	CANDLE/Beeswax [per pound] <i>Scented beeswax candles are the most expensive form of lighting money can buy. One pound of beeswax candles burns up to 12 hours.</i>	
3d	CANDLE/Tallow [per pound] <i>Tallow candles are the cheapest form of candle, they are smelly and they gutter a lot. One pound of tallow candles burns up to 8 hours.</i>	
3f	CANDLE/Tallow [each] <i>One small tallow candle will burn for about 2 hours.</i>	0,25 lb.
9d	CANDLE/12 hour [each] <i>A time candle burn exceptionally evenly. Being made from specially prepared homogeneous wax to a constant size with an even wick. They are marked every hour and will burn for twelve hours.</i>	0,25 lb.
2d	COMB	0,1 lb.
2d	GREASE [per pound]	
12d	LANTERN <i>A lantern is made of pressed steel or copper and consists of a box with a small windows and a carrying handle on top of the lantern. A lantern has a small reservoir that can hold one pint of lampoil. One pint of lampoil lasts for about four hours.</i>	2 lb.
3d	OIL/Cooking [per gallon]	12 lb.
12d	OIL/Lamp [per gallon]	12 lb.
20d	PAINT [per gallon] <i>Paints are used on houses, carts and wagons, and on ships. Earthen colors are the easiest to make. Vivid colors can cost up to three times as much and are less stable.</i>	12 lb.
9d	TAR [per gallon] <i>Tar is a naturally occurring substance (bitumen). It is used to caulk (waterproof) ships, etc.</i>	15 lb.
6d	TINDERBOX <i>A tinderbox includes flint, steel and tinderling and is the usual method for starting fires. Tinderling (often birch bark, dried leaves or cotton waste) must be regularly replenished.</i>	1 lb.
1d	TORCH/Candlewood <i>These specially made torches, with their head wrapped in oil and tallow soaked cotton waste, provide a strong source of light, useful in emergencies. It lasts about two hours, but is rather smoky and flickers a lot.</i>	1 lb.
1d	WAX/Candle [per pound] <i>Wax candles are the standard form of candles, used by most folk. One pound of wax candles burns for about 4 hours. It doesn't smell and smoke as bad as tallow candles.</i>	

### CHARCOALER

2d	CHARCOAL [per bushel]	20 lbs.
6d	COAL [per bushel] <i>Coal can be collected, where the coal reaches the surface. Coal is rarely mined. It produces more heat than charcoal, but charcoal is almost always enough for most smiths. It is primary used by miners in smelters and by alchemists.</i>	40 lbs.
2d	FIREWOOD [per hundredweight]	100 lbs.
6d	PEAT [per bushel] <i>Where peat is plentiful (in cool boggy or swampy regions) it forms a very good fuel source, being lightweight whilst still burning well.</i>	40 lbs.

### CLOTHIER

102d	AKETON/Cloth [Fo El Ua Sh Tx Ab Hp Gr]	5,1 lb.
48d	BLANKET/Wool	2,5 lbs.
8d	CAP/Cloth [Sk]	0,4 lb.
16d	CAP/Quilt [Sk]	1,2 lb.
112d	CLOAK/Cloth [Sh] <i>Also covers the back of Thorax, Abdomen, Hips, Thighs and Knees at GM dicretion. Can also cover back and front of Thorax, Abdomen, Hips, Thighs, Knees and Arms if wrapped around the body but that limits what a character can do at GM dicretion.</i>	5,6 lb.
10d	CLOTH/Buckram [per sqaure yard]	1 lb.

28d	CLOTH/Emelan Linen [per square yard]	0,8 lb.
4d	CLOTH/Linen [per square yard]	0,8 lb.
12d	CLOTH/Russet [per square yard]	1,4 lb.
6d	CLOTH/Serge [per square yard]	1,4 lb.
72d	CLOTH/Silk [per square yard]	1,2 lb.
24d	CLOTH/Worsted [per square yard]	1,6 lb.
178d	COAT OF PLATES/Cloth [Sh Tx Ab Hp Gr Th] <i>Ring Cloth (B2 E3 P2 F1 on Thorax and Abdomen.</i>	10,1 lb.
32d	COWL/Quilt [Sk Nk]	2,4 lb.
170d	DYE/Dragon's Blood [per ounce]	
40d	DYE/Indigo [per ounce]	
160d	DYE/Saffron [per ounce]	
200d	DYE/Tazach Purple [per ounce]	
260d	GAMBESON/Quilt [Fo El Ua Sh Tx Ab Hp Gr Th]	19,5 lb.
8d	GLOVES/Cloth [Ha]	0,4 lb.
16d	HOOD/Cloth [Sk Nk]	0,8 lb.
50d	LACE [per yard]	0,25 lb.
88d	LEGGINGS/Cloth [Hp Gr Th Kn Cf Ft]	4,4 lb.
184d	LEGGINGS/Quilt [Hp Gr Th Kn Cf Ft]	9,2 lb.
12d	MATTRESS/Straw/Empty	1,5 lbs.
9d	PURSE/Buckram [capacity: 1 pound]	0,25 lb.
65d	PURSE/Silk [capacity: 1 pound]	0,3 lb.
156d	ROBE/Cloth [Fo El Ua Sh Tx Ab Hp Gr Th Kn Cf]	7,8 lb.
20d	SHEET/Linen,	2,5 lbs.
104d	SURCOAT/Cloth [Sh Tx Ab Hp Gr Th Kn]	5,2 lb.
76d	TABARD/Cloth [Sh Tx Ab Hp Gr]	3,8 lb.
152d	TABARD/Quilt [Sh Tx Ab Hp Gr]	11,4 lb.
2f	THREAD [per 200 feet ball]	0,1 lb.
44d	TUNIC/Cloth [Ua Sh Tx Ab Hp Gr]	4,4 lb.
176d	TUNIC/Quilt [Ua Sh Tx Ab Hp Gr]	13,2 lb.
2d	TWINE [per 150 feet ball] <i>Twine is a very strong thread.</i>	0,2 lb.
56d	VEST/Cloth [Sh Tx Ab]	2,8 lb.

#### COURTESAN/PROSTITUTE

12d +	COURTESAN [per evening]
1d	PROSTITUTE [per evening]

#### EMBALMER

72d+	BURIAL/Pyre
3d+	BURIAL/Unmarked Grave
200d +	EMBALMING

#### FISHERMAN

1d	CRAB [per pound]
1d	FISH/Cod [per pound]
x2	FISH/Dried/Salted/Smoked [per pound]
3f	FISH/Eel [per pound]
2f	FISH/Herring [per pound]
1f	FISH/Mackerel [per pound]
1d	FISH/Pike [per pound]
2d	FISH/Salmon [per pound]
1d 2f	FISH/Sturgeon [per pound]
1d 1f	FISH/Trout [per pound]
2f	OYSTERS [per pound]
6d	SEAWEED/Dolce [per pound]

## FLETCHER

15d	ARROWS [per dozen]	1,2 lbs.
96d	BOW/Hart	2 lb.
36d	BOW/Long	3 lb.
24d	BOW/Short	2 lb.
1d	STRING/Bow	0,1 lb.

## GLASSWORKER

5d	BOTTLE/Alchemy [capacity: 6 ounce]	0,5 lb.
6d	BOTTLE/Glass [capacity: 1 pint]	1 lb.
4d	BOTTLE/Perfume [capacity: 1 ounce]	0,25 lb.
12d +	GLASS/Pottery	Var.
12d	GLASS/Stained [per square foot]	1 lb.
2d	GLASS/Window [per square foot]	1 lb.
30d	INKWELL/Glass	1 lb.

## HARPER

36d	DRUM	4 lbs.
18d	FLUTE	0,75 lb.
72d	HORN/Musical	4 lbs.
300d	HARP	25 lbs.
	<i>The jarind harp consist of a sounding box to which are attached a large number of strings held on a boxed frame. The harp is played with two hands and its weight must be supported by the ground.</i>	
200d	LUTE	5 lbs.
	<i>The lute consist of a large hemispherical sound box, over which is stretched a number of strings which terminates in a bent-neck. The instrument is played by plucking or strumming the strings. The lute is the precursor of the guitar.</i>	
120d	LYRE	3,5 lbs.
	<i>The lyre consists of a sound box (traditionally a tortoise/turtle shell) with two arms and a crossbar. Between the crossbar and the sound box are stretched the strings, which are played by strumming.</i>	
3d +	ENTERTAINMENT/Musical [per harper, per evening]	
60d	PIPES	2 lbs.

## HERALD

5000d + GRANT OF ARMS

## HIDEWORKER

148d	APRON/Leather [Tx Ab Hp Gr Th]	7,4 lb.
	<i>Only covers the front of Thorax and Abdomen.</i>	
24d	BACKPACK/Leather [capacity: 40 pounds]	8 lbs.
10d	BELT/Leather	1 lb.
9d	BELLOWS	2 lbs.
	<i>Bellows made from two pieces of wood, with a leather air sack between.</i>	
10d	BRACES/Leather [Fo]	0,8 lb.
64d	CALFBOOTS/Leather [Cf Ft]	3,2 lb.
16d	CAP/Leather [Sk]	0,8 lb.
18d	CASE/Bow	4 lbs.
	<i>Designed to store an unstrung bow, spare strings, archery braces and other oddments.</i>	
3d	CASE/Scroll	1 lbs.
	<i>A scroll case is designed to protect a scroll of vellum or parchment from the elements. The case has toggle fastened lid.</i>	
284d	COAT OF PLATES/Leather [Sh Tx Ab Hp Gr Th]	15,4 lb.
	<i>Ring on Thorax and Abdomen.</i>	
3d	COLLAR/Dog	0,75 lb.
16d	COLLAR/Leather [Nk]	0,8 lb.
32d	COWL/Leather [Sk Nk]	1,6 lb.
20d	GAUNTLET/Falconer's	1,5 lbs.
16d	GAUNTLETS/Leather [Ha]	0,8 lb.
204d	HAKETON/Leather [Fo El Ua Sh Tx Ab Hp Gr]	10,2 lb.
18d	HARNESS/Ox	18 lbs.

30d	HIDE/Beaver	1,5 lbs.
16d	HIDE/Calf	2,5 lbs.
6d	HIDE/Deer	1,5 lbs.
30d	HIDE/Ermine/Sable	0,1 lb.
120d +	HIDE/Exotic	var.
10d	HIDE/Horse	10 lbs.
3d	HIDE/Lamb	0,75 lb.
24d	HIDE/Otter/Weasel	1,5 lbs.
12d	HIDE/Ox	7,5 lbs.
5d	HIDE/Pig	1,75 lbs.
1d	HIDE/Rabbit	0,5 lb.
16d	HIDE/Reindeer	4,5 lbs.
24d	HIDE/Seal	6 lbs.
4d	HIDE/Sheep	1,5 lbs.
20d	HORN/Hunting	1 lb.
76d	KNEEBOOTS/Leather [Kn Cf Ft]	3,8 lb.
2d	LEAD/Dog	0,5 lb.
12d	LEATHER/Tanned [per square yard]	1,8 lb.
176d	LEGGINGS//Leather [Hp Gr Th Kn Cf Ft]	8,8 lb.
6d	MUZZLE/Dog	1,5 lbs.
8d	QUIVER [capacity: 12 arrows/bolts]	3 lbs.
7d	SANDALS/Leather	0,6 lbs.
18d	SCABBARD/Hafted	0,75 lbs.
	<i>A hafted scabbard protects the head of an axe, a flail, etc.</i>	
48d	SCABBARD/Large	3 lbs.
	<i>The large sized scabbard is designed for a bastard sword, or a battlesword.</i>	
28d	SCABBARD/Medium	1,25 lbs.
	<i>The medium sized scabbard is designed for a broadsword, an estoc, a falchion, a longknife, or a shortsword.</i>	
21d	SCABBARD/Small	0,5 lbs.
	<i>The small sized scabbard is designed for a dagger, a keltan, a knife, or a taburi.</i>	
24d	SHOES/Leather [Ft]	1,2 lb.
6d	SLING	0,1 lb.
176d	TUNIC/Leather [Ua Sh Tx Ab Hp Gr]	8,8 lb.
112d	VEST/Leather [Sh Tx Ab]	5,6 lb.
12d	WHIP	2 lb.
10d	WINESKIN [capacity: 1 gallon]	1 lb.

### INNKEEPER

1d	ACCOMMODATION/Dorm	
6d	ACCOMMODATION/Room	
1f	ALE [per pint]	
72d	ALE/Hogshead [50 gallons]	440 lbs.
1d	ALE/Sib [per dose]	1 lb.
	<i>Common. A dune coloured powder that is mixed with hot ale. It is used as an energy drink.. Common in Tharda, rare everywhere else. One pint equals one dose.</i>	
1d	BATH	
1f	BEER [per pint]	
75d	BEER/Hogshead [50 gallons]	440 lbs.
4d	BRANDY [per goblet]	
1800d	BRANDY/Hogshead [50 gallons]	440 lbs.
1f	CIDER [per pint]	
80d	CIDER/Hogshead [50 gallons]	440 lbs.
2f	MEAD [per pint]	
140d	MEAD/Hogshead [50 gallons]	440 lbs.
3f	MEAL/Cold	
1d	MEAL/Hot	
1d	PROVISIONS [per pound]	
	<i>Trail rations. Dried and salted food can stay fresh for two to three weeks. As an example, a porter needs about 5 pounds of food per day.</i>	
3f	WINE [per goblet]	
8d	WINE/Ilvir's Crook [per yard]	
	<i>Uncommon. A sweet wine from the Sethimyael berries. Available in inns where pilgrims to Araka-Kalai gather, especially in Tashal, Olokand, Leriei, and Shiran. It is served in a yard-long glass flask containing four doses (8 ounce each).</i>	
400d	WINE/Hogshead [50 gallons]	440 lbs.



## JEWELER

16d	AMBER [per ounce]	
75d	IVORY [per pound]	
72d +	SCALES [per ounce]	

## LEXIGRAPHER

3d	INK/Black [per quart]	2 lbs.
4d	INK/Blue [per quart]	2 lbs.
5d	INK/Brown [per quart]	2 lbs.
4d	INK/Green [per quart]	2 lbs.
6d	INK/Red [per quart]	2 lbs.
12d +	MAP	0,1 lb.
1d	QUILL	1 oz.
1d	SCROLL/Parchment [per square feet] <i>Lambskin prepared for use as a writing material.</i>	0,1 lb.
2d	SCROLL/Vellum [per square feet] <i>Calfskin prepared for use as a writing material.</i>	0,1 lb.
36d	SEAL/Signature	0,25 lbs.

## LITIGANT

24d +	CONTRACT/Legal	
12d	COURT APPEARANCE [per day]	
18d	DEED/Legal	
12d	WILL/Legal	

## LOCKSMITH

6d	FETTERS/Iron	5 lbs.
2d +	KEY	0,1 lb.
4d +	LOCK/Door	1 lb.
18d +	LOCK/Box	0,25 lb.
7d +	LOCK/Padlock	0,5 lb.
12d +	LOCK PICKS	1 lb.

## MANOR/MARKET

1f	APPLES [per pound]	
6d	APPLES [per bushel]	50 lbs.
2d	BACON [per pound]	
5d	BARLEY [per bushel]	40 lbs.
5d	BEANS [per bushel]	40 lbs.
1d 2f	BEEF [per pound]	
3f	BERRIES [per pound]	
2f	BUTTER [per pound]	
2f	CABBAGES [per pound]	
60d	CALF/Live	
2d	CAPON/Live	
1d	CHEESE [per pound]	
3f	CHERRIES [per pound]	
1d	CHICKEN [per pound]	
1d 2f	CHICKEN/Live	
6d	CREAM [per gallon]	10 lbs.
2f	CURDS [per pound]	
1d 1f	DUCK [per pound]	
1d 3f	DUCK/Live	
2d	EGGS [per dozen]	1 lb.
2d	GOAT [per pound]	
10d	GOAT/Live	
1d 2f	GOOSE [per pound]	
2d 2f	GOOSE/Live	

2d	HAM [per pound]	
6d	HAY [per bushel]	10 lbs.
12d	HONEY [per gallon]	12 lbs.
1d	HORSEMEAT [per pound]	
3d	LAMB [per pound]	
6d	LAMB/Live	
1d	LARD [per pound]	
2f	LENTILS [per pound]	
3d	MILK/Cow [per gallon]	10 lbs.
2d	MILK/Goat [per gallon]	10 lbs.
2d	MILK/Sheep [per gallon]	10 lbs.
3f	MUTTON [per pound]	
4d	OATS [per bushel]	25 lbs.
8d	OLIVES [per pound]	
96d	OX/COW	
2f	PEARS [per pound]	
5d	PEAS [per bushel]	40 lbs.
2d	PHEASANT [per pound]	
1d	PIDGEON [per pound]	
24d	PIG/Live	
3f	PLUMS [per pound]	
1d 3f	PORK [per pound]	
1d 2f	RABBIT [per pound]	
1f	RAT ON A STICK [each]	1 lb.
6d	RYE [per bushel]	45 lbs.
12d	SHEEP/Live	
2d 2f	SWAN [per pound]	
12d	SWAN/Live	
3d	VEAL [per pound]	
2d	VENISON [per pound]	
4d	VETCHES [per bushel]	40 lbs.
8d	WHEAT [per bushel]	50 lbs.
4d	WOOL/Raw [per pound]	

### MASON

12d	GRINDSTONE	17 lbs.
250d	MILLSTONE	50 lbs.
2f	STONE/Freestone [per 8 cubic feet]	400 lbs.
3f	STONE/Freestone/Telen [per 8 cubic feet]	400 lbs.
3d	STONE/Marble [per 8 cubic feet]	400 lbs.

### METALSMITH

12d	AXE/Hatchet	2 lbs.
6d	AXLE	12 lbs.
1d +	BELLS/Small	0,5 lb.
200d	BELLS/Temple	50 lbs.
18d	BRANDING IRON	3 lbs.
6d	CANDLE HOLDER/Pewter	1 lb.
	<i>Free standing candle sticks are a sign of wealth, used on dining tables and desks. Pewter and copper are common materials, however candlesticks can be manufactured from gold, silver and other precious materials.</i>	
48d	CAGE 1 ft <sup>3</sup>	2,5 lbs.
	<i>A small cage, 12"x12"x12", with a door in the top used to hold small animals. Made form copper rod construction.</i>	
342d	CAGE 24 ft <sup>3</sup>	21 lbs.
	<i>A medium sized cage, 4x3x2 ft, with a clasp fastened door in the side used to hold larger animals, such as dogs. Made form wrought iron rod.</i>	
1 260d	CAGE 144 ft <sup>3</sup>	160 lbs.
	<i>A large cage, 4x6x6 ft, with a heavy duty bolt fastened door in the side used to hold humanoids and large animals, Made form 1/2" diameter wrought iron bars.</i>	
52d	COIN BALANCE	0,5 lb.
	<i>A merchant's coin balance is a simple balance with a suspended pan at one end and a calibrated rod with sliding mass, used for checking the weight of coins.</i>	
10d	CAULDRON/Iron	10 lbs.

1d	CHAIN/Iron [per feet]	1 lbs.
6d	CHISEL	0,75 lb.
9d	CROWBAR	5,5 lbs.
6d	DAGGER/Knife	1 lbs.
2d	FISHING HOOKS [per dozen]	0,1 lb.
3d	GOBLET/Pewter	0,75 lb.
10d	GRAPPLE	2 lbs.
6d	HAMMER	1 lb.
24d	HAMMER/Blacksmith's	8 lbs.
40d	HARPOON	5 lbs.
3d	HOE	4 lbs.
1d	HORSESHOE	0,75 lb.
20d +	MIRROR/Small <i>A small silver mirror on the end of a 9'' handle.</i>	0,5 lb.
2d	NAILS [per 40 nails]	1 lb.
12d	PAN/Copper	3 lbs.
8d	PICK	8 lbs.
6d	PITCHFORK	5 lbs.
5d	PLATE/Pewter	0,5 lb.
2d	PLATE/Tin	0,5 lb.
6d	RAZOR	0,5 lb.
144d	SCALES & WEIGHTS <i>Two pan scale set, one large copper pan for the produce, the other smaller for weights. Will weigh up to 5 lbs. in 1/4 lbs. increments.</i>	7,5 lbs.
24d	SCYTHE	5 lbs.
10d	AXE/Sickle	1 lbs.
8d	SPADE/SHOVEL	7 lbs.
1d 2f	SPIKES [per 5 nails]	1 lb.
15d	SPIT AND STAND <i>A spit is a 4 foot, 1/4'' diamater, iron shaft, normally with a crank handle on one end, used for roasting meat over a fire.</i>	12 lbs.
18d	SPURS [per pair]	0,5 lb.
4d	TANKARD/Pewter	1 lb.
3d	TONGS/Blacksmith's	2 lbs.
1d 3f	TONGS/Copper <i>Small copper tongs used in cooking, about 10'' in length.</i>	0,25 lbs.
40d	TRAP/Large <i>Hunting traps consist of a pair of spiked jaws which are sprung shut when the prey steps on a lever.</i>	8 lbs.
30d	TRAP/Small <i>Hunting traps consist of a pair of spiked jaws which are sprung shut when the prey steps on a lever.</i>	1,5 lbs.
1d	WEDGE/Iron <i>Iron wedges have lots of uses, including assisting in climbing and securing doors.</i>	2 lbs.
36d	WHETSTONE	3 lbs.
24d	WOODAXE	3 lbs.

### MILLER

1f	BREAD/Rye [per loaf]	1,5 lbs.
2f	BREAD/Wheat [per loaf]	1,5 lbs.
2f	BUNS [per dozen]	3 lbs.
1f	FLOUR/Rye [per pound]	
2f	FLOUR/Wheat [per pound]	
1f	OATCAKES [per dozen]	1 lb.
1f	OATMEAL [per pound]	
3f	PIES/Fruit [each]	1 lb.
1d	PIES/Meat [each]	1 lb.
2f	SCONES [per dozen]	1 lb.

### MINER

5d 1f	BRASS [per pound]	
5d 2f	BRONZE [per pound]	
4d	COPPER [per pound]	
400d	GOLD [per ounce]	
1f	IRON [per pound]	20 lbs.

2f	LEAD [per pound]
5d	PEWTER [per pound]
20d	SILVER [per ounce]
1d	STEEL [per pound]
1d 3f	TIN [per pound]
2d 2f	ZINC [per pound]

### OSTLER

24d	BLANKET/Saddle	2,5 lbs.
12d	BRIDLE	1 lb.
18d	COLLAR/Horse	2 lbs.
3d	COMB/Horse	0,5 lb.
420d	DONKEY	
2f	FODDER [per day]	15 lbs.
2f	GROOMING/Horse	
18d	HARNESS/Horse	8 lbs.
600d	HORSE/Hacherdad	
360d	HORSE/Khanset	
480d	HORSE/Lankhum	
800d	HORSE/Reksyni	
450d	MULE	
420d	PONY/Chelni	
450d	PONY/Hodiri	
80d	SADDLE/Riding	10 lbs.
240d	SADDLE/War	20 lbs.
2d	SHOEING/Horse [per one]	
1d	STABLING [per day]	
2d	STABLING/w. Feed [per day]	
4d	TACK REPAIR/Horse [per day]	

### PERFUMER

8d	BLUSHER [per ounce]
14d	EYE SHADER [per ounce]
3d	FOUND CREAM/White [per ounce]
12d +	INCENSE [per pound]
7d	LIPSTICK [per ounce]
25d	OIL/Myrtle [per ounce] <i>Fragrant oil from the berries and flowers of the myrtle shrub. Imported</i>
20d	OIL/Rose [per ounce]
6d +	PERFUME [per ounce] <i>Shiran perfumes can cost as much as ten times this.</i>
240d	PERFUME/Dryad Sweat [per ounce] <i>Rare. A dark pink aphrodisiac syrup. The bottle contains 8-12 doses depending on the user's comeliness.</i>
1d	SOAP [per ounce]
40d	SPICE/Bdellium [per ounce] <i>Fragrant gum resin of certain plants. Imported.</i>
70d	SPICE/Frankincense [per ounce] <i>Fragrant, hard, yellow amber-like resin from spruce bark, used for burning as incense. Imported.</i>
150d	SPICE/Myrrh [per ounce] <i>Aromatic gum resin from certain shrubs, important in the manufacture of perfumes. Imported.</i>
100d	SPICE/Nard [per ounce] <i>Aromatic mountain plant oil, believed to be an important ingredient in ointments. Imported.</i>
3d	TALC [per ounce]

### POTTER

2d	BOWL/Ceramic	0,5 lb.
2f	CANDLE HOLDER/Pottery <i>A simple pottery candle stick, mounted on to a handled saucer.</i>	0,5 lb.
1d	CUP/Ceramic	0,25 lb.
4d	FLAGON/Ceramic	1,25 lbs.
4d	INKWELL/Pottery	1 lb.
7d	JAR/Ceramic/Large [capacity: 4 ounce]	0,75 lb.
4d	JAR/Ceramic/Medium [capacity: 2 ounce]	0,4 lb.

2d	JAR/Ceramic/Small [capacity: 1 ounce]	0,2 lb.
6d	MORTAR & PESTLE	1 lb.
1d	PLATE/Ceramic	0,5 lb.
12d	URN/Ceramic [capacity: 5 gallons]	4 lbs.
4d	VASE/Ceramic	0,5 lb.

### SALTER

1f	SALT [per pound]	
12d	SALT [per bushel]	50 lbs.

### SCRIBE

2d	TRANSLATION/Verbal [per 100 words]
4d	TRANSLATION/Written [per 25 words]

### SHIPWRIGHT

12d	ANCHOR	25 lbs.
3d	CLOTH/Canvas [per square yard]	2,0 lb.
2d	FISHING LINE [per 10 feet]	0,1 lb.
3d	LOBSTER/CRAB POT	3 lbs.
	<i>These small open frame wicker baskets are used for catching lobsters and crabs. The pots are baited, placed in shallow water and marked with a wooden float. They are retrieved each day.</i>	
18d	LODESTONE	0,25 lb.
	<i>A lodestone is a naturally magnetic mineral (normally magnetite) which when freely suspended, will live itself in the direction of the magnetic pole.</i>	
6d	MAST [per feet]	4 lbs.
48d	NET	4 lbs.
60d	NET/Fishing [per fathom]	5 lbs.
	<i>This is a standard fishing net made from ¼" hemp rope. It is ten feet deep and sold by the fathom (6 feet) length. A typical fishing boat will carry about twenty fathoms of fishing net.</i>	
5d	OAR	7 lbs.
6d	ROPE/¼" [per fathom]	1 lb.
	<i>¼" hemp rope used for rigging and tethers of small boats. It is also used for securing cargoes and as light duty climbing rope. It can hold up to 300 lbs. before breaking.</i>	
12d	ROPE/½" [per fathom]	2 lbs.
	<i>Used for permanent rigging such as stays and light anchor ropes. It is also a good size rope for hoists and general purpose climbing. Capacity 500 lbs.</i>	
5d	TACKLE & BLOCK	2,5 lbs.
	<i>A wooden tackle block with two pulleys, for ½" rope - two of these make an effective hoist (when attached to a spar or beam).</i>	

### SLAVER

480d +	SLAVE/Gladiator
240d +	SLAVE/Labourer
300d +	SLAVE/Pleasure

### TENTMAKER

18d	AWNINGS	10 lbs.
	<i>A shop front awning with a length of 12 feet and a width of 4 feet.</i>	
4d	BAG/Canvas [capacity: 15 pounds]	2 lbs.
24d	CANVAS STALLS]	38 lbs.
	<i>This is a typical market stall with a pitched roof, a planked sales bench with skirting around the side. The stall is complete with frame, bench, and canvas. Size 3 feet by 6 feet and weight 19 lbs. (canvas) and 19 lbs. (wood).</i>	
40d	CARPET/Wool [per square yard]	2 lbs.
1d	SACK/Buckram [capacity: 50 pounds]	2 lbs.
2f	SACK/Linen [capacity: 25 pounds]	1 lb.
200d +	TENT/Pavilion	38 lbs.
	<i>This tent has a single canvas door and has a size of 7 feet diameter, reaching 8 feet in the center. The tent can sleep three with ease.</i>	
27d	TENT/Two-Man	22 lbs.
	<i>Consist of two triangle frames of wood which are placed at either end of the tent, attached by a rope which form the ridge of the tent. The tent will sleep two comfortable. Size 6 feet by 3½ feet.</i>	

## THATCHER

2d	BASKET	2,5 lbs.
	<i>A typical small shopping basket, with an open basket of about 2 cubic feet capacity with an arched carrying handle.</i>	
1d	BROOM	4 lbs.

## THESPIAN

3d + THEATRE [per performance]

## TIMBERWRIGHT

12d	WOOD/Ash [per 10 cubic feet]	380 lbs.
4d	WOOD/BirchAsh [per 10 cubic feet]	380 lbs.
8d	WOOD/Cedar [per 10 cubic feet]	320 lbs.
10d	WOOD/Elm [per 10 cubic feet]	290 lbs.
12d	WOOD/Fir [per 10 cubic feet]	350 lbs.
6d	WOOD/Larch [per 10 cubic feet]	340 lbs.
14d	WOOD/Maple [per 10 cubic feet]	360 lbs.
16d	WOOD/Oak [per 10 cubic feet]	380 lbs.
8d	WOOD/Pine [per 10 cubic feet]	290 lbs.
6d	WOOD/Spruce [per 10 cubic feet]	360 lbs.

## WEAPONCRAFTER

6d	ARROWHEADS [per dozen]	0,3 lb.
100d	AXE/Battle	6 lb.
72d	AXE/Hand	3 lb.
48d	AXE/Shorkana	2 lb.
90d	AXE/Warhammer	5 lb.
20d	BOLTS [per dozen]	1,2 lbs.
84d	CLUB/Mace	4 lb.
48d	CLUB/Morningstar	5 lb.
60d	CROSSBOW	5 lb.
24d	DAGGER	1 lb.
36d	DAGGER/Keltan	2 lb.
20d	DAGGER/Taburi	1 lb.
60d	FLAIL/Ball & Chain	4 lb.
12d	FLAIL/Nachakas	1 lb.
60d	FLAIL/War	5 lb.
84d	POLEARM/Glaive/Bill	8 lb.
40d	POLEARM/Jousting Pole	8 lb.
120d	POLEARM/Lance	8 lb.
96d	POLEARM/Pike	12 lb.
96d	POLEARM/Poleaxe	8 lb.
24d	SHIELD/Buckler	3 lb.
72d	SHIELD/Kite	7 lb.
60d	SHIELD/Knight	5 lb.
42d	SHIELD/Round	6 lb.
96d	SHIELD/Tower	8 lb.
60d	SPEAR	5 lb.
48d	SPEAR/Javelin	3 lb.
72d	SPEAR/Trident	6 lb.
2d	STRING/Crossbow	0,2 lb.
180d	SWORD/Bastard	5 lb.
230d	SWORD/Battle	8 lb.
150d	SWORD/Broad	3 lb.
150d	SWORD/Estoc	3 lb.
120d	SWORD/Falchion	4 lb.
96d	SWORD/Longknife	1 lb.
90d	SWORD/Short	2 lb.

## WHALER

180d	AMBERGRIS [per ounce]	
	<i>Sweet, musty smelling, pitchlike lump of black mass, believed to be a cure-all. It is usually found floating on the ocean or cast ashore.</i>	
60d	HORN/Narwhale [per pound]	
12d	OIL/Whale [per gallon]	10 lbs.
6d	WHALEBONE [per pound]	

## WOODCRAFTER

7d 2f	BARREL/Churn [capacity: 8 gallons]	8,5 lbs.
10d	BARREL/Firkin [capacity: 10 gallons]	20 lbs.
15d	BARREL/Hogshead [capacity: 50 gallons]	40 lbs.
5d	BARREL/Keg [capacity: 5 gallons]	10 lbs.
20d	BARREL/Pipe [capacity: 100 gallons]	80 lbs.
30d	BARREL/Tun [capacity: 200 gallons]	160 lbs.
50d	BED	85 lbs.
	<i>A typical bed is six foot long by three foot wide. Beds are a luxury item, most people sleeping on straw pallets laid directly on the floor. A straw mattress will cost 12d for a single bed.</i>	
72d	BED/Bunk	140 lbs.
	<i>A double bunk consists of two beds, each two foot six wide by six foot long, stacked one above the other.</i>	
84d	BED/Double	120 lbs.
	<i>A typical double bed is six foot long by four foot six inches wide. A straw mattress will cost 18 d fora double bed.</i>	
216d	BED/Four Poster	155 lbs.
	<i>A four poster bed is a double bed whose legs have been extended to support a frame over the bed. Fromthis frame curtains are suspended creating a tent-like enclosure ensuring greater privacy.</i>	
18d	BENCH	22 lbs.
1d	BOWL/Wood	0,5 lb.
2d	BOX/Wooden	1 lb.
	<i>A simple, unreinforced box with a totally removable lid, secured by nails or optional clasps. It is 12'' by 8'' by 6''.</i>	
4d	BUCKET [capacity: 3 gallons]	3 lbs.
144d	CABINET	68 lbs.
	<i>A typical cabinet will be three foot high, four foot wide and eighteen inches deep. Two doors, which can be fastened by a bolt, give access to the cabinet.</i>	
80d	CART/2 Wheels	
	<i>An agricultural cart, which is pulled by a single horse or ox. Has a single axle with two wheels, a bench for the driver, and open framed sides enclosing a cargo space of 6'6'' long by 5' wide (and about 3½' height). Cargo capacity is about ¾ off a tun (approximately 1500 lbs.).</i>	
12d	CHAIR	7 lbs.
18d	CHEST	11 lbs.
	<i>A sturdy reinforced chest, bound by two iron straps with a cylindrical section lid. A large clasp can be fitted by a padlock, or lock, this is not included. It is 1' by 2' by 2'.</i>	
12d	CLUB	3 lb.
24d	CLUB/Maul	7 lb.
9d	COFFIN	21 lbs.
3f	CUP/Wood	0,25 lb.
12d	FLAIL/Grain	2 lb.
6d	LADDER/8 feet	19 lbs.
7d	NEEDLE/Wooden	1 dr.
100d +	PALANQUIN	160 lbs.
	<i>A palanquin is a box, normally large enough for two people, with a frame extending to form a roof, the whole covered in drapes. The palanquin is carried by teams of slaves supported by beams.</i>	
3d	PIPE/Smoking	0,25 lb.
48d	PLOUGH	16 lbs.
18d	SKI POLE	4 lbs.
42d	SKIS/Wood [per pair]	6 lbs.
80d	SLED	65 lbs.
	<i>Dog sleds are used on the large ice-plains, normally pulled by teams of between eight and twelve dogs. The sled is capable of carry one man and about 250 lbs. of cargo.</i>	
36d	SNOWSHOES [per pair]	3,5 lbs.
36d	SPEAR/Staff	4 lb.
3f	SPOON/Wood	0,1 lb.
12d	STAFFSLING	1 lb.

36d	<b>TABLE</b> <i>For some reson tables are often found t obe 2'6'' by 4', though any sized table is possible. Such a size of table will seat four.</i>	47 lbs.
12d	<b>TRUNK [capacity: 100 pounds]</b> <i>A strong rectangular box (1'6'' by 2' by 3'6'') with a sturdy hinged lid secure with a clasp.</i>	20 lbs.
220d	<b>WAGON/4 Wheels]</b> <i>A four wheeled wagon is pulled by two horses or oxen. Cargo capacity is about two tuns (approximately 4000 lbs.)</i>	
18d	<b>WHEEL [each]</b>	20 lbs.
30d	<b>WHEEL/Iron Rim [each]</b>	28 lbs.
10d	<b>WHEELBARROW</b> <i>A small wheel barrow, with one wheel at one end and two handles at the other. Capacity is about 2' by 1'6'' by 1', or about 50 – 60 lbs.</i>	24 lbs.
3d	<b>YOKE/Ox</b>	1,5 lbs.



## INDEX

3/4 HELM/Hounskull/Kurbul .....	4	BOX/Wooden .....	17	CLOTH/Silk .....	6
3/4 HELM/Hounskull/Plate.....	4	BRACES/Leather.....	7	CLOTH/Worsted .....	6
ACCOMMODATION/Dorm.....	8	BRANDING IRON.....	11	CLUB.....	17
ACCOMMODATION/Room.....	8	BRANDY.....	8	CLUB/Mace.....	16
AILETTES/Kurbul.....	4	BRASS.....	12	CLUB/Maul .....	17
AILETTES/Plate .....	4	BREAD/Rye .....	12	CLUB/Morningstar.....	16
AKETON/Cloth .....	5	BREAD/Wheat .....	12	COAL .....	5
ALE.....	8	BREASTPLATE/Kurbul .....	4	COAT OF PLATES/Cloth.....	6
ALE/Sib .....	8	BREASTPLATE/Plate.....	4	COAT OF PLATES/Leather .....	7
AMBER.....	10	BRIDLE.....	13	COAT OF PLATES/Ring.....	4
AMBERGRIS .....	17	BROADSWORD .....	16	COFFIN.....	17
ANCHOR.....	15	BRONZE .....	12	COIN BALANCE.....	11
APPLES .....	10	BROOM.....	16	COLLAR/Dog .....	7
APRON/Leather.....	7	BRUSH.....	5	COLLAR/Horse.....	13
ARROWHEADS.....	16	BUCKET .....	17	COLLAR/Leather .....	7
ARROWS.....	7	BUCKLER.....	16	COLLAR/Ring .....	4
AWNINGS.....	15	BUNS.....	12	COMB .....	5
AXE/Battle.....	16	BURIAL/Pyre .....	6	COMB/Horse.....	13
AXE/Hand.....	16	BURIAL/Unmarked Grave .....	6	CONTRACT/Legal.....	10
AXE/Hatchet.....	11	BUTTER.....	10	COPPER .....	12
AXE/Shorkana .....	16	BYRNIE/Mail.....	4	COUDES/Kurbul.....	4
AXE/Sickle .....	12	BYRNIE/Ring.....	4	COUDES/Plate .....	4
AXE/Warhammer.....	16	BYRNIE/Scale.....	4	COURT APPEARANCE.....	10
AXLE.....	11	CABBAGES .....	10	COURTESAN .....	6
BACKPACK/Leather.....	7	CABINET .....	17	COW .....	11
BACKPLATE/Kurbul.....	4	CAGE.....	11	COWL WITH VENTAIL/Mail.....	4
BACKPLATE/Plate .....	4	CALF/Live.....	10	COWL/Mail.....	4
BACON.....	10	CALFBOOTS/Leather.....	7	COWL/Quilt .....	6
BAG/Canvas .....	15	CALFBOOTS/Ring .....	4	CRAB .....	6
BALL & CHAIN.....	16	CANDLE HOLDER/Pewter.....	11	CREAM.....	10
BARLEY.....	10	CANDLE HOLDER/Pottery.....	13	CROSSBOW .....	16
BARREL.....	17	CANDLE/12 hour.....	5	CROWBAR.....	12
BASKET .....	16	CANDLE/Beeswax.....	5	CUP/Ceramic.....	13
BASTARD SWORD.....	16	CANDLE/Tallow.....	5	CUP/Wood.....	17
BATH.....	8	CANVAS STALLS .....	15	CURDS .....	10
BATTLEAXE .....	16	CAP/Cloth.....	5	DAGGER.....	16
BATTLESWORD.....	16	CAP/Leather .....	7	DAGGER/Keltan.....	16
BEANS.....	10	CAP/Quilt .....	5	DAGGER/Knife .....	12
BEAR/Trained.....	3	CAPON/Live.....	10	DAGGER/Taburi.....	16
BED.....	17	CARPET/Wool .....	15	DEED/Legal .....	10
BEEF.....	10	CART/2 Wheels.....	17	DOG/Sled .....	3
BEER .....	8	CASE/Bow.....	7	DOG/Trained .....	3
BELLOWS.....	7	CASE/Scroll.....	7	DONKEY .....	13
BELLS/Small .....	11	CAULDRON/Iron.....	11	DRUM .....	7
BELLS/Temple .....	11	CHAIN/Iron .....	12	DUCK.....	10
BELT/Leather .....	7	CHAIR .....	17	DUCK/Live .....	10
BENCH .....	17	CHARCOAL.....	5	DYE/Dragon's Blood .....	6
BERRIES .....	10	CHEESE .....	10	DYE/Indigo .....	6
BLANKET/Saddle .....	13	CHERRIES .....	10	DYE/Saffron.....	6
BLANKET/Wool .....	5	CHEST.....	17	DYE/Tazach Purple.....	6
BLUSHER.....	13	CHICKEN.....	10	EGGS.....	10
BOLTS .....	16	CHICKEN/Live .....	10	EMBALMING.....	6
BOTTLE/Alchemy.....	7	CHISEL .....	12	ENTERTAINMENT/Musical.....	7
BOTTLE/Glass .....	7	CIDER .....	8	ESTOC.....	16
BOTTLE/Perfume.....	7	CLOAK/Cloth.....	5	EYE SHADER .....	13
BOW/Cross .....	16	CLOTH/Buckram .....	5	FALCHION.....	16
BOW/Hart .....	7	CLOTH/Canvas .....	15	FALCON/Trained.....	3
BOW/Long.....	7	CLOTH/Emelan Linen.....	6	FETTERS/Iron.....	10
BOW/Short.....	7	CLOTH/Linen.....	6	FIREWOOD .....	5
BOWL/Ceramics.....	13	CLOTH/Russet .....	6	FISH/Cod.....	6
BOWL/Wood .....	17	CLOTH/Serge.....	6	FISH/Dried/Salted/Smoked .....	6

FISH/Eel.....	6	HERB/Kithyl Root.....	3	LIPSTICK.....	13
FISH/Herring.....	6	HIDE/Beaver.....	8	LOBSTER/CRAB POT.....	15
FISH/Mackerel.....	6	HIDE/Calf.....	8	LOCK PICKS.....	10
FISH/Pike.....	6	HIDE/Deer.....	8	LOCK/Box.....	10
FISH/Salmon.....	6	HIDE/Ermine/Sable.....	8	LOCK/Door.....	10
FISH/Sturgeon.....	6	HIDE/Exotic.....	8	LOCK/Padlock.....	10
FISH/Trout.....	6	HIDE/Horse.....	8	LODESTONE.....	15
FISHING HOOKS.....	12	HIDE/Lamb.....	8	LONGKNIFE.....	16
FISHING LINE.....	15	HIDE/Otter/Weasel.....	8	LUTE.....	7
FLAGON/Ceramic.....	13	HIDE/Ox.....	8	LYRE.....	7
FLAIL/Ball & Chain.....	16	HIDE/Pig.....	8	MACE.....	16
FLAIL/Grain.....	17	HIDE/Rabbit.....	8	MAP.....	10
FLAIL/Nachakas.....	16	HIDE/Reindeer.....	8	MAST.....	15
FLAIL/War.....	16	HIDE/Seal.....	8	MATTRESS/Straw/Empty.....	6
FLOUR.....	12	HIDE/Sheep.....	8	MAUL.....	17
FLOUR/Wheat.....	12	HOE.....	12	MEAD.....	8
FLUTE.....	7	HONEY.....	11	MEAL/Cold.....	8
FODDER.....	13	HOOD/Cloth.....	6	MEAL/Hot.....	8
FOUND CREAM/White.....	13	HORN/Hunting.....	8	MILK.....	11
GAMBESON/Quilt.....	6	HORN/Musical.....	7	MILLSTONE.....	11
GAUNTLET/Falconer's.....	7	HORN/Narwhale.....	17	MIRROR/Small.....	12
GAUNTLETS/Leather.....	7	HORSE/Hacherdad.....	13	MITTENS/Mail.....	5
GAUNTLETS/Ring.....	4	HORSE/Khanset.....	13	MORNINGSTAR.....	16
GLAIVE/BILL.....	16	HORSE/Lankhum.....	13	MORTAL & PESTLE.....	15
GLASS/Pottery.....	7	HORSE/Lankhum.....	13	MULE.....	13
GLASS/Stained.....	7	HORSE/Reksyni.....	13	MUTTON.....	11
GLASS/Window.....	7	HORSEMEAT.....	11	MUZZLE/Dog.....	8
GLOVES/Cloth.....	6	HORSESHOE.....	12	NACHAKAS.....	16
GOAT.....	10	INCENSE.....	13	NAILS.....	12
GOAT/Live.....	10	INK/Black.....	10	NEEDLE/Wooden.....	17
GOBLET/Pewter.....	12	INK/Blue.....	10	NET.....	15
GOLD.....	12	INK/Brown.....	10	NET/Fishing.....	15
GOOSE.....	10	INK/Green.....	10	OAR.....	15
GOOSE/Live.....	10	INK/Red.....	10	OATCAKES.....	12
GORGET/Kurbul.....	4	INKWELL/Glass.....	7	OATMEAL.....	12
GORGET/Plate.....	4	INKWELL/Pottery.....	13	OATS.....	11
GRAINFLAIL.....	17	IRON.....	12	OIL/Cooking.....	5
GRANT OF ARMS.....	7	IVORY.....	10	OIL/Lamp.....	5
GRAPPLE.....	12	JAR/Ceramic.....	13	OIL/Myrtle.....	13
GREASE.....	5	JAVELIN.....	16	OIL/Rose.....	13
GREAT HELMET/Plate.....	4	JOUSTING POLE.....	16	OIL/Whale.....	17
GREAVES/Kurbul.....	4	KELTAN.....	16	OLIVES.....	11
GREAVES/Plate.....	4	KEY.....	10	OPIATES.....	3
GRINDSTONE.....	11	KITE SHIELD.....	16	OX.....	11
GROOMING/Horse.....	13	KNEEBOOTS/Leather.....	8	OYSTERS.....	6
HAKETON/Leather.....	7	KNEECOPS/Kurbul.....	4	PAINT.....	5
HALFHELM/Kurbul.....	4	KNEECOPS/Plate.....	4	PALANQUIN.....	17
HALFHELM/Plate.....	4	KNIFE.....	12	PAN/Copper.....	12
HALFHELM/Ring.....	4	KNIGHT SHIELD.....	16	PEARS.....	11
HAM.....	11	LACE.....	6	PEAS.....	11
HAMMER.....	12	LADDER/8 feet.....	17	PEAT.....	5
HAMMER/Blacksmith's.....	12	LAMB.....	11	PERFUME.....	13
HANDAXE.....	16	LAMB/Live.....	11	PERFUME/Dryad Sweat.....	13
HARNESS/Horse.....	13	LANCE.....	16	PEWTER.....	13
HARNESS/Ox.....	7	LANTERN.....	5	PHEASANT.....	11
HARP.....	7	LARD.....	11	PICK.....	12
HARPOON.....	12	LEAD.....	13	PIDGEON.....	11
HATCHET.....	11	LEAD/Dog.....	8	PIES/Fruit.....	12
HAUBERK/Mail.....	4	LEATHER/Tanned.....	8	PIES/Meat.....	12
HAUBERK/Ring.....	4	LEGGINGS/Cloth.....	6	PIG/Live.....	11
HAUBERK/Scale.....	4	LEGGINGS/Leather.....	8	PIKE.....	16
HAY.....	11	LEGGINGS/Mail.....	4	PIPE/Smoking.....	17
HERB/Danistor Fungus.....	3	LEGGINGS/Quilt.....	6	PIPES.....	7
HERB/Hreyochor Leaves.....	3	LEGGINGS/Ring.....	5	PIPEWEED.....	3
		LENTILS.....	11		

PITCHFORK.....	12	SCALES.....	10	SWORD/Bastard.....	16
PLATE/Ceramic.....	15	SCALES & WEIGHTS.....	12	SWORD/Battle.....	16
PLATE/Pewter.....	12	SCONES.....	12	SWORD/Broad.....	16
PLATE/Tin.....	12	SCROLL/Parchment.....	10	SWORD/Estoc.....	16
PLOUGH.....	17	SCROLL/Vellum.....	10	SWORD/Falchion.....	16
PLUMS.....	11	SCYTHE.....	12	SWORD/Longknife.....	16
POLEARM/Glaive/Bill.....	16	SEAL/Signature.....	10	SWORD/Short.....	16
POLEARM/Jousting Pole.....	16	SEAWEED/Dolce.....	6	TABARD/Cloth.....	6
POLEARM/Lance.....	16	SHEEP/Live.....	11	TABARD/Quilt.....	6
POLEARM/Pike.....	16	SHEET/Linen.....	6	TABLE.....	18
POLEARM/Poleaxe.....	16	SHIELD/Buckler.....	16	TABURI.....	16
POLEAXE.....	16	SHIELD/Kite.....	16	TACK REPAIR/Horse.....	13
PONY/Chelni.....	13	SHIELD/Knight.....	16	TACKLE & BLOCK.....	15
PONY/Hodiri.....	13	SHIELD/Round.....	16	TALC.....	13
PORK.....	11	SHIELD/Tower.....	16	TANKARD/Pewter.....	12
POTION/Baby-Can-Wait.....	3	SHOEING/Horse.....	13	TAR.....	5
POTION/Berilik Balm.....	3	SHOES/Leather.....	8	TEA.....	4
POTION/Corruption Jelly.....	3	SHORKANA.....	16	TENT/Pavilion.....	15
POTION/Daddy-Can't-Wait.....	3	SHORTSWORD.....	16	TENT/Two-Man.....	15
POTION/Elmithra.....	3	SICKLE.....	12	THEATRE.....	16
POTION/Eye-Of-Dwarf.....	3	SILVER.....	13	THREAD.....	6
POTION/Eye-Of-Elf.....	3	SKI POLE.....	17	TIN.....	13
POTION/Fletharasha.....	3	SKIS/Wood.....	17	TINDERBOX.....	5
POTION/Goodheart.....	3	SLAVE/Gladiator.....	15	TONGS/Blacksmith's.....	12
POTION/Green Demon.....	3	SLAVE/Labourer.....	15	TONGS/Copper.....	12
POTION/Halea's Tresses.....	3	SLAVE/Pleasure.....	15	TORCH/Candlewood.....	5
POTION/Heal-All.....	3	SLED.....	17	TOWER SHIELD.....	16
POTION/Heavy Curtain.....	3	SLING.....	8	TRANSLATION/Verbal.....	15
POTION/Heir-In-A-Bottle.....	3	SNOWSHOES.....	17	TRANSLATION/Written.....	15
POTION/Hru's Might.....	3	SOAP.....	13	TRAP.....	12
POTION/Ichor of Agrik.....	3	SPADE/SHOVEL.....	12	TRIDENT.....	16
POTION/Khalmet's Theriac.....	3	SPEAR.....	16	TRUNK.....	18
POTION/Maermal's Blessing.....	3	SPEAR/Javelin.....	16	TUNIC/Cloth.....	6
POTION/Nectar of Wisdom.....	3	SPEAR/Staff.....	17	TUNIC/Leather.....	8
POTION/Tharin's Rock Salt.....	3	SPEAR/Trident.....	16	TUNIC/Quilt.....	6
POTION/Tirrala's Pillow.....	3	SPICE/ Nutmeg.....	4	TWINE.....	6
POTION/Two-More-Legs.....	4	SPICE/Alum.....	4	URN/Ceramic.....	15
POTION/Uhla Oil.....	4	SPICE/Bdellium.....	13	WAGON/4 Wheels.....	18
PROSTITUTE.....	6	SPICE/Camphor.....	4	VAMBRACES/Kurbul.....	5
PROVISIONS.....	8	SPICE/Cinnamon.....	4	VAMBRACES/Plate.....	5
PURSE/Buckram.....	6	SPICE/Frankincense.....	13	WARFLAIL.....	16
PURSE/Silk.....	6	SPICE/Ginger.....	4	WARHAMMER.....	16
QUILL.....	10	SPICE/Ginseng.....	4	VASE/Ceramic.....	15
QUIVER.....	8	SPICE/Lashu Powder.....	4	WAX/Candle.....	5
RABBIT.....	11	SPICE/Myrrh.....	13	VEAL.....	11
RAT ON A STICK.....	11	SPICE/Nard.....	13	WEDGE/Iron.....	12
RAZOR.....	12	SPICE/Pepper.....	4	VENISON.....	11
REREBRACES/Kurbul.....	5	SPIKES.....	12	VEST/Cloth.....	6
REREBRACES/Plate.....	5	SPIT AND STAND.....	12	VEST/Leather.....	8
ROBE/Cloth.....	6	SPONGES.....	4	VEST/Ring.....	5
ROPE/¼.....	15	SPOON/Wood.....	17	VEST/Scale.....	5
ROPE/½.....	15	SPURS.....	12	VETCHES.....	11
ROUNDSHIELD.....	16	STABLING.....	13	WHALEBONE.....	17
RYE.....	11	STABLING/w. Feed.....	13	WHEAT.....	11
SACK/Buckram.....	15	STAFF.....	17	WHEEL.....	18
SACK/Linen.....	15	STAFFSLING.....	17	WHEEL/Iron Rim.....	18
SADDLE/Riding.....	13	STEEL.....	13	WHEELBARROW.....	18
SADDLE/War.....	13	STONE.....	11	WHETSTONE.....	12
SALT.....	15	STRING/Bow.....	7	WHIP.....	8
SANDALS/Leather.....	8	STRING/Crossbow.....	16	WILL/Legal.....	10
SCABBARD/Hafted.....	8	SUGAR.....	4	WINE.....	8
SCABBARD/Large.....	8	SURCOAT/Cloth.....	6	WINE/Ilvir's Crook.....	8
SCABBARD/Medium.....	8	SWAN.....	11	WINESKIN.....	8
SCABBARD/Small.....	8	SWAN/Live.....	11	WOOD/Ash.....	16

WOOD/Birch .....	16
WOOD/Cedar.....	16
WOOD/Elm.....	16
WOOD/Fir .....	16
WOOD/Larch.....	16

WOOD/Maple.....	16
WOOD/Oak .....	16
WOOD/Pine.....	16
WOOD/Spruce.....	16
WOODAXE.....	12

WOOL/Raw.....	11
YOKE/Ox .....	18
ZINC.....	13

